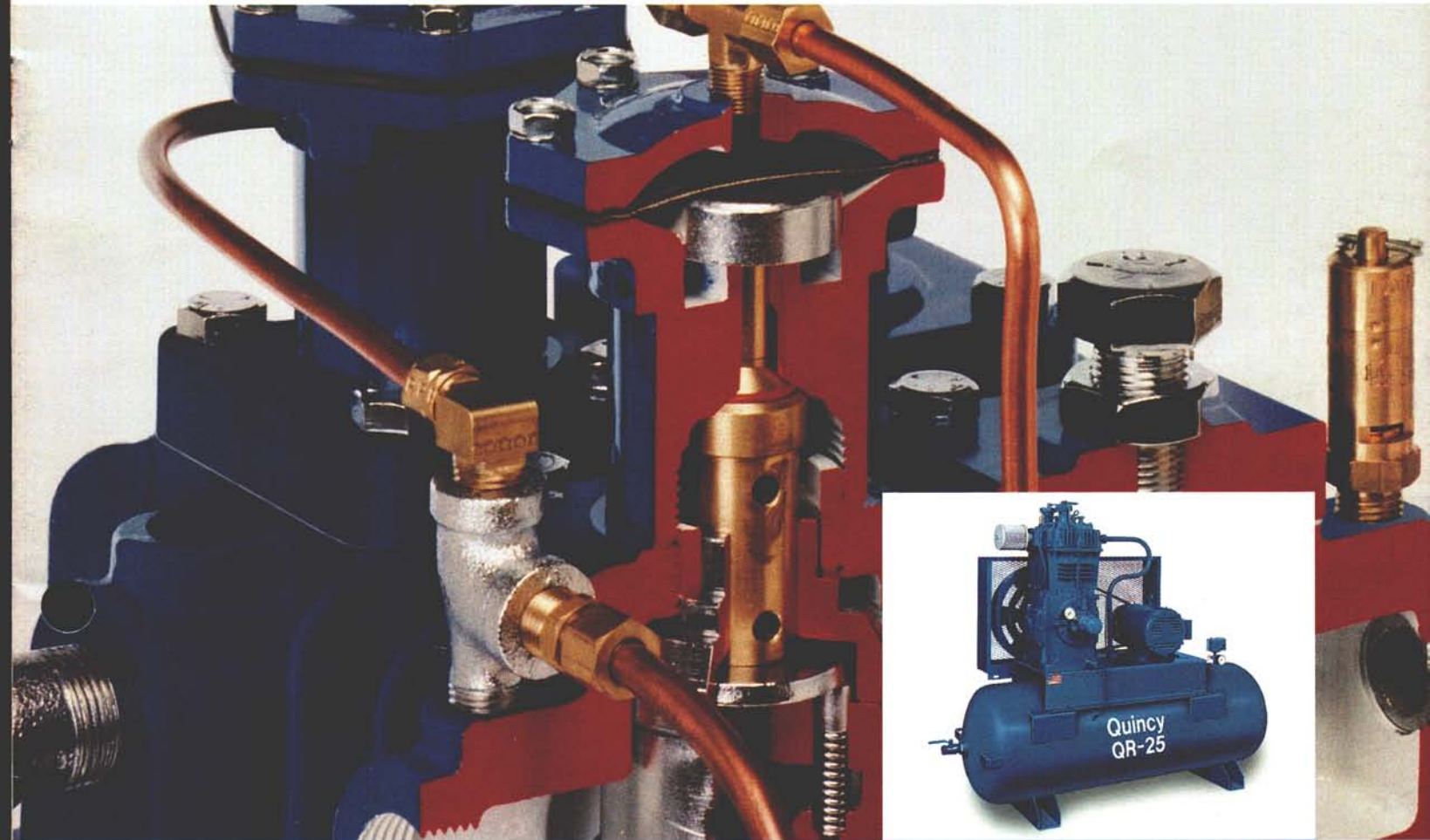


The Quincy QR-25

is still the industry standard for reciprocating air compressors.



*It's Quincy quality
at its classic best.*

Quincy

Compressor Division

Coltec Industries



The QR-25 Series of Reciprocating Compressors • 1/3-25 HP

We made the best compressor we possibly could. Satisfied users made it a classic.

The QR-25 is recognized throughout the industry as a leader, a classic in its field. No compressor can match it for performance and reliability.

That's why the QR-25 comes with the most comprehensive **five-year warranty** in the business. With nearly two million compressors in the marketplace, we're extremely confident about the way we build our products.

For example, most QR-25 models are pressure-lubed, providing positive lubrication of all critical areas, including the crankshaft bearings, rod journals, and wrist pin surfaces. A convenient spin-on oil filter (optional on some models) assures contaminant-free lubricant at all times.

The QR-25 runs at slower speeds, resulting in lower operating temperatures and maximum compressor efficiency. It features durable cast iron construction for longer life and less downtime, and heavy-duty disc-type valves for efficient air flow. The result: more air per horsepower.

With several decades of reliable service behind it, the QR-25 has become the one compressor that all others are compared to. It's a model of durability—in fact, it's quite common to find QR-25s still in use after 20, 30, even 40 years of operation.

But we don't expect you to be impressed by the QR-25's history. We think you'll be impressed enough when you see what the QR-25 can do for you now. For performance and reliability, nothing tops the classic, the QR-25.

What makes it better?

One of the first things you notice about the QR-25 is its weight: it's heavier than rival compressors, and for good reason. The body of the QR-25 is cast iron, and the castings are good and thick to prevent heat-related distortion of internal tolerances. The QR-25's volumetric efficiency is enhanced by a combination of thick horizontal and vertical cooling fins, which control metal expansion and help prevent oil carryover.

Additional weight is provided by our counterweighted one-piece crankshaft, which reduces the vibration that can shorten the life of main bearings, rod bearings, wrist pins, and wrist pin bearings. The crankshaft is supported on both ends by our oversized tapered roller bearings, which, thanks to their greater surface area, last longer than the ball bearings used by the competition.

Valves are traditionally the items on a compressor that require the most maintenance, but on the QR-25, we've taken steps to break that tradition. For instance, valve maintenance can be done on the QR-25 without removing the cylinder head. Each valve pocket has its own cover, so there's no need to remove the cylinder head, unhook the discharge lines, unbolt the intercoolers, or do anything else usually associated with valve maintenance.

The QR-25's valves also help reduce maintenance costs and downtime with their low-lift design. The lifting action is controlled by coil springs, which absorb and release energy throughout their entire length. This results in longer valve life.

Finally, we come to the Safe-Q-Lube pressure lubrication system, the finest in the industry. Thanks to a positive displacement rotary oil pump, the Safe-Q-Lube system lubricates every critical area of the compressor—not just the "bottom end." That includes not only the main bearings and rod bearings, but the connecting rods and piston pin bearings as well. To keep the oil clean, Quincy uses a spin-on automotive-type oil filter. An additional benefit of the QR-25 pressure lubrication system is that since all internal areas are being lubricated, they're also being cooled—the oil helps absorb the heat generated by compressing air. The QR-25's large oil capacity allows the oil to remain in the crankcase longer, dissipating heat before being pumped back into the system.

Thanks to its design and slow operating speeds, the two-stage QR-25 is a 200 psig continuous duty machine. In addition, many models are capable of 500 psig intermittent duty for such special applications.

From its extra heavy-duty construction to its low-lift valves, to its pressure lubrication system, there's no question that the QR-25 is Quincy quality, inside and out.



Inside the QR-25 Two-Stage Basic

Intake unloaders allow for loadless starting, system flexibility, energy savings, and less wear and tear on motor

Individual valve pockets allow easy access for routine maintenance

High-pressure pistons are cast iron for strength and long life

Cast iron cylinders maintain rigid tolerances for high efficiency

Intercooler has large circular fins for maximum heat dissipation and longer life

Tapered roller bearings are oversized and easily adjusted for trouble-free operation

Cast iron crankcase and flywheel for strength and durability

Cast iron valve seats are lapped for a total seal, eliminating need for discharge line check valve

Steel valve discs use low-lift design and cast iron bumpers for better efficiency and less downtime

Aluminum connecting rods with oil passage for full flow lubrication to piston pins to extend compressor life

Rifle-drilled, counterweighted one-piece crankshaft reduces vibration, extends life of bearings and wrist pins

Hydraulic unloader protects compressor if oil pressure drops below normal (when loadless starting or dual control is specified)

Pressure lubrication with positive displacement oil pump to assure constant lubrication of all critical wear areas

Spin-on oil filter for convenient, clean lubrication

Quality features performing quality functions

Slow speed operation requires less maintenance, produces more CFM per horsepower.

Valve design lets the QR-25 run efficiently at lower temperatures, eliminates need for discharge line check valves.

Loadless starting for lower energy costs and less wear on motor.

Intake unloaders reduce work and horsepower when demand is low, thus lowering operating costs and extending life. They also unload the intercooler for the lowest unloaded horsepower possible.

Safe-Q-Lubrication permits the compressor to start load-free until oil pressure rises high enough to close the hydraulic unloader.

Dual oil filtration, first at the oil pick-up tube, second through the spin-on oil filter.

Other standard features

- Two-stage capability: 200 psig at continuous operation, up to 500 psig intermittent on certain models
- Rebuildable components
- Low maintenance requirements
- Manually reversible oil pump

Options

- Some models can be rated to perform at pressures up to 500 psig
- Dual control

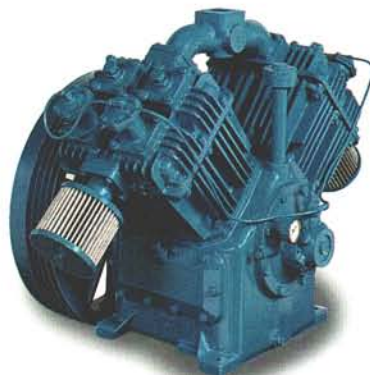
The QR-25 Series of Reciprocating Compressors

Technical information and specs

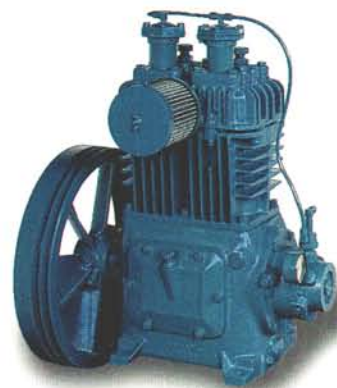
QR-25 Single-Stage Basic Compressors



Model X-8



Model 4125



Model 240

• **Splash-lubricated models: X2, X3, X8, and 108.**

These models feature Quincy's positive splash lubrication system, which accurately and consistently lubricates all moving parts. All models have oversized tapered roller main bearings for added efficiency and longer life. Additional features include a large oil reservoir and a dust-proof crankcase.

• **Pressure-lubricated models: 206, 210, 216, 240, 270, and 4125.**

Models 206 and 210 are designed to operate counterclockwise only, and are lubricated by a positive displacement gerotor oil pump. The manually reversible gerotor oil pump on models 216, 240, 270, and 4125 permits operation in either direction.* A spin-on oil filter is optional for models 216, 240, 270, and 4125.

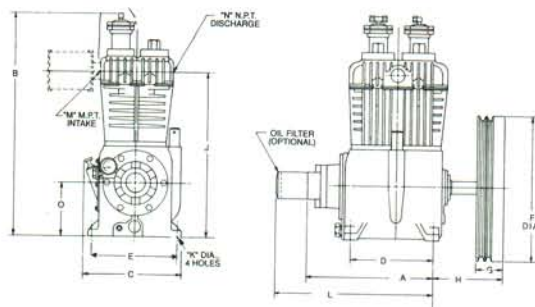
PERFORMANCE DATA

MODEL	TYPICAL HORSEPOWER RANGE 100 PSI	BORE	STROKE	NO. CYL.	CFM PISTON DISPLACEMENT PER REV.	MIN. RPM	CFM F.A.D. @100 PSI MIN. RPM	MAX. RPM	CFM F.A.D. @100 PSI MAX. RPM	MAXIMUM CONTINUOUS PRESSURE	MAXIMUM INTERMITTENT PRESSURE	APPROX. SHIPPING WEIGHT
X2**	1/3-3/4	2.00	1.75	1	.00318	400	.82	900	1.83	100	150	19
X3	1/2-1	2.38	1.75	1	.00449	400	1.13	900	2.55	100	100	25
X8	1 1/2	2.38	2.00	2	.01025	400	2.30	900	5.17	100	100	39
108	3/4-2	3.00	2.50	1	.01023	400	2.70	900	6.08	100	150	107
206	3/4-2	2.00	2.00	2	.00727	400	1.60	1000	3.60	100	150	71
210	1-2	2.50	2.00	2	.01136	400	2.82	1000	6.34	100	150	71
216	1 1/2-5	3.00	2.50	2	.02045	400	4.74	900	10.70	100	100	165
240	3-7 1/2	4.00	3.00	2	.04363	400	10.47	900	23.56	100	100	247
270	5-10	4.50	4.00	2	.07363	400	15.61	900	35.12	100	100	430
4125	10-20	4.50	4.00	V4	.14726	400	31.81	940	71.57	100	100	767

**NOTE: X-2 AVAILABLE WITH 8" STAMPED STEEL OR 10" FAN TYPE SHEAVES. (WITH 8" = 19 LBS.), (WITH 10" = 25 LBS.)
DATA REFERENCE EDA-1408

*Clockwise rotation requires special flywheels and manual adjustment of the gerotor oil pumps.

DIMENSIONS—BASIC COMPRESSORS



MODEL	A	B	C	D	E	F	G	H	J	K	L	M	N	O
X2-8	4.31	10.12	8.37	3.38	5.12	8.00	.88	2.12	9.00	.34	—	1/4	1/4	3.19
X2-10	4.31	10.12	8.37	3.38	5.12	10.00	1.50	2.91	9.00	.34	—	1/4	1/4	3.19
X3	4.31	10.62	8.37	3.38	5.12	10.00	1.50	2.72	9.50	.34	—	1/4	1/4	3.19
X8	7.75	11.91	8.61	6.75	5.25	10.00	1.50	2.91	9.75	.34	—	1/2	3/8	3.31
108	7.66	20.50	12.96	4.19	7.38	14.00	3.00	4.31	15.41	.41	—	3/4	3/4	5.00
206	9.38	14.97	9.32	6.00	5.88	12.00	1.50	3.38	11.71	.34	—	1/2	1/2	3.89
210	9.38	14.97	9.32	6.00	5.88	12.00	1.50	3.38	11.71	.34	—	1/2	1/2	3.89
216	11.69	21.00	13.11	7.50	7.38	14.00	3.00	5.75	16.12	.41	15.03	3/4	3/4	5.38
240	13.69	24.47	14.06	9.12	9.38	16.00	3.00	6.81	18.06	.50	17.03	1 1/4	1 1/4	5.88
270	15.21	29.56	18.96	10.25	10.75	19.50	3.75	6.75	23.00	.56	18.55	2	2	8.25
4125	17.50	16.32	25.69	12.00	15.50	23.50	5.00	11.12	15.82	.69	20.84	2	1 1/2	9.62

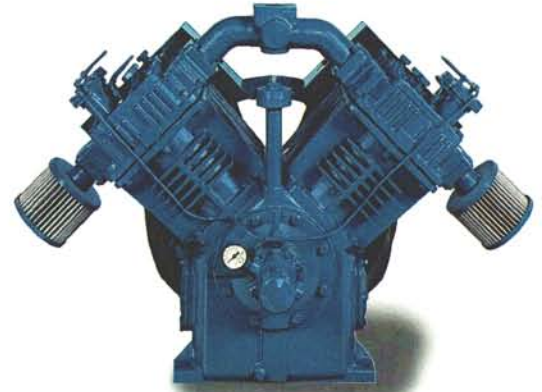
QR-25 Two-Stage Basic Compressors



Model 325



Model 390



Model 5120

Our two-stage pressure-lubricated compressors are designed for heavy-duty service at higher pressures; the spin-on oil filter is standard. The manually reversible oil pump permits easy operation in either direction.* The integral finned tube intercooler maintains low temperature between stages, for efficient operation.

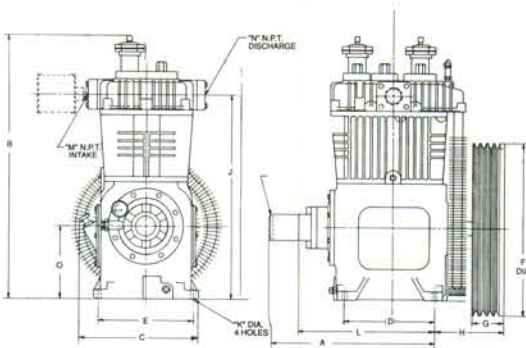
PERFORMANCE DATA

MODEL	TYPICAL HORSEPOWER RANGE 175 PSI	BORE L.P.	BORE H.P.	STROKE	NO. CYL.	CFM PISTON DISPLACEMENT PER REV.	MIN. RPM	CFM F.A.D. @ 175 PSI MIN RPM	MAX. RPM	CFM F.A.D. @ 175 PSI MAX RPM	MAXIMUM CONTINUOUS PRESSURE	MAXIMUM INTERMITTENT PRESSURE	APPROX. SHIPPING WEIGHT
310	1 1/2-3	3.50	2.00	2.50	2	.01392	400	4.06	920	9.35	200	500	175
325	3-5	4.50	2.50	3.00	2	.02761	400	8.28	900	18.64	200	500	255
340	5-10	5.25	3.00	3.50	2	.04385	400	13.16	900	29.64	200	500	452
350	5-15	6.00	3.25	3.50	2	.05727	400	15.58	940	36.60	200	350	480
370	5-15	6.00	3.25	4.00	2	.06545	400	18.59	1070	49.72	200	250	481
390	7 1/2-20	7.50	4.00	4.00	2	.10227	400	29.45	940	69.21	200	250	739
5120	10-25	6.00	3.25	4.00	V4	.13090	400	36.53	1040	94.97	200	250	904
W5120	10-25	6.00	3.25	4.00	V4	.13090	400	39.76	1040	103.33	200	250	992

*Clockwise rotation requires special flywheels and manual adjustment of the gerotor oil pumps.

DATA REFERENCE EDA-1408

DIMENSIONS—BASIC COMPRESSORS



MODEL	A	B	C	D	E	F	G	H	J	K	L	M	N	O
310	15.03	21.00	13.13	7.50	7.38	14.00	3.00	5.75	15.67	.41	11.96	3/4	3/4	5.38
325	17.03	24.44	16.00	9.12	9.38	16.00	3.00	6.81	18.12	.50	13.69	1	3/4	5.88
340	18.55	29.84	19.31	10.25	10.75	19.50	3.75	7.88	23.31	.56	15.21	1 1/2	1 1/4	8.25
350	18.55	30.50	19.31	10.25	10.75	19.50	3.75	9.25	23.94	.56	15.21	2	1 1/4	8.25
370	18.55	30.75	19.31	10.25	10.75	19.50	3.75	9.25	24.19	.56	15.21	2	1 1/4	8.25
390	20.64	33.75	21.56	11.00	12.75	23.50	5.00	12.50	26.53	.69	17.34	2 1/2	1 1/2	9.00
5120	20.84	16.32	25.69	12.00	15.50	23.50	5.00	8.62	15.82	.69	17.50	2	1 1/2	9.62
W5120	20.84	16.32	25.69	12.00	15.50	19.50	5.00	11.12	15.82	.69	17.50	2	1 1/2	9.62

QR-25 Base-Mounted Industrial Compressor Units



Model D5120

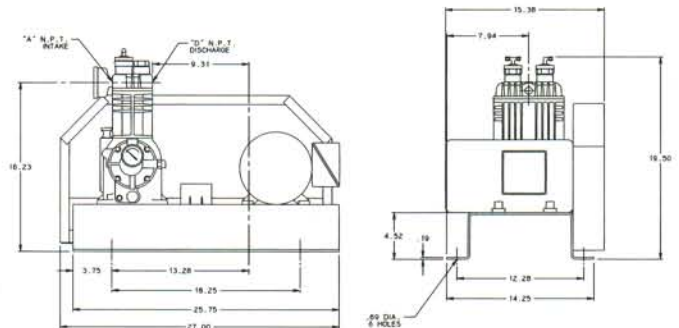
Standard equipment includes air compressor, electric motor or gasoline engine, inlet air filter, enclosed belt guard, V-belt drive, and steel baseplate. Oil filter is standard on two-stage models. For optional automatic operation, specify loadless starting and pressure switch; for continuous operation or dual control, specify Quincy's variable differential intake valve unloader. RPM and CFM are for operating pressure of 100 psi on single-stage models, 175 psi on two-stage models.

PERFORMANCE DATA

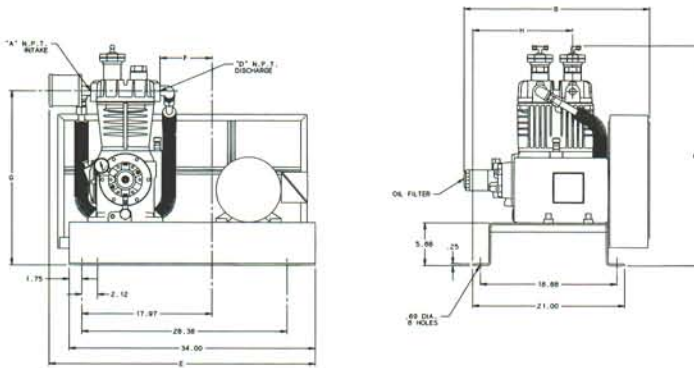
MODEL	HORSE POWER	BORE L.P.	BORE H.P.	STROKE	NO. CYL.	RPM	CFM PISTON DISP.	CFM F.A.D.	APPROX. SHIPPING WEIGHT
D210*	1	2.50	—	2.00	2	481	5.50	3.30	185
	1 1/2					691	7.90	4.80	190
D310	2	3.50	2.00	2.50	2	628	8.70	6.30	415
D325	3	4.50	2.50	3.00	2	492	13.60	10.40	455
	5					828	22.90	17.40	465
	10 ENG.					838	23.10	17.50	455
D340	7-1/2	5.25	3.00	3.50	2	786	34.50	26.00	735
D350	10	6.00	3.25	3.50	2	859	49.20	33.40	980
	18 ENG.					859	49.20	33.40	1065
D370	15	6.00	3.25	4.00	2	1060	69.40	49.30	1045
D390	20	7.50	4.00	4.00	2	937	95.80	69.20	1275
D5120	25	6.00	3.25	4.00	V4	1028	134.60	93.90	1530

*SINGLE-STAGE MODEL

DIMENSIONS—D210



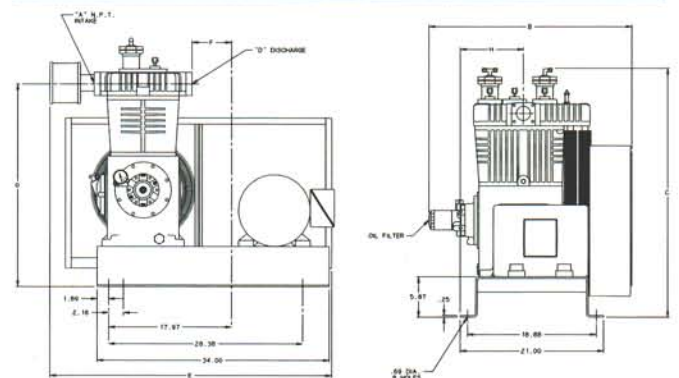
DIMENSIONS—D310 and D325



LEGEND

MODELS	A	B	C	D	E	F	G	H
D310	3/4	21.50	13.44	3/4	34.00	6.75	21.54	13.44
D325	1.00	25.66	30.31	3/4	36.82	7.19	24.00	13.81

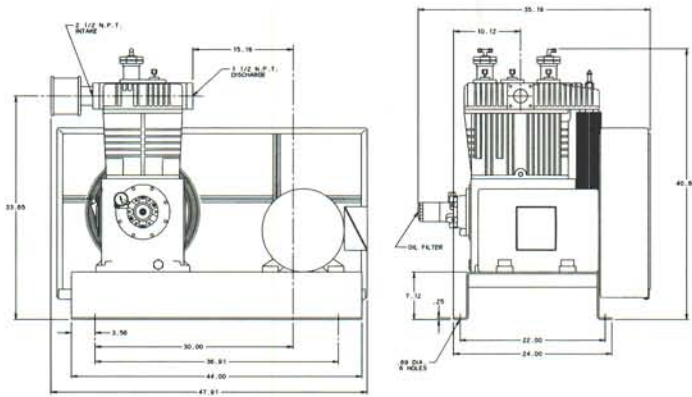
DIMENSIONS—D340, D350, and D370



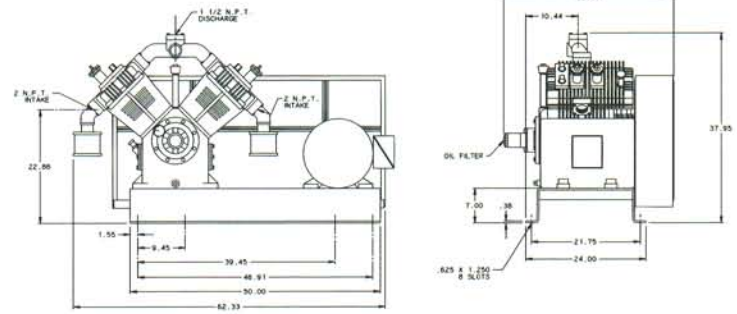
LEGEND

MODELS	A	B	C	D	E	F	G	H
D340	1 1/2	28.31	35.72	1 1/4	39.96	6.45	29.19	10.62
D350	2	29.72	36.38	1 1/4	41.28	5.81	29.81	9.25
D370	2	29.72	36.63	1 1/4	41.28	5.81	30.06	9.25

DIMENSIONS—D390



DIMENSIONS—D5120



QR-25 Two-Stage Tank-Mounted Mobile Compressor Units



Model HT325

Specifically designed for fleet service requirements. Standard equipment includes compressor with continuous run unloader, oil filter, intake air filters with weather hood, V-belt drive, enclosed belt guard, 200 psi working pressure ASME National Board air receiver with fittings. Engine idle control and 12-volt electric start are standard; 12-volt charging system is optional.

Mobile QR-25 units that conform to California 462L are available with optional receivers.

PERFORMANCE DATA

MODEL	HORSE POWER	BORE L.P.	BORE L.P.	STROKE	NO. CYL.	RPM	CFM PISTON DISP.	CFM F.A.D. @ 175 PSI	PILOT VALVE SETTING PSI	TANK SIZE (GALLONS)	APPROX. SHIPPING WEIGHT
HT325	10 ENG.	4.50	2.50	3.00	2	838	23.10	17.50	165-175	30	500
HT350	18 ENG.	6.00	3.25	3.50	2	859	49.20	33.40	165-175	80	1300

DATA REFERENCE EDA-1408

QR-25 Tank-Mounted Industrial Compressor Units



Model F5120

All two-stage models come complete with Safe-Q-Lube system and spin-on oil filter. Start-stop mechanism includes Quincy's unique loadless starting. Standard equipment includes pressure gauge, pressure relief valve, tank drain, shut-off valve, enclosed belt guard, pressure switch, and inlet filter. Dual control is standard on 10-25 hp tank-mounted units.

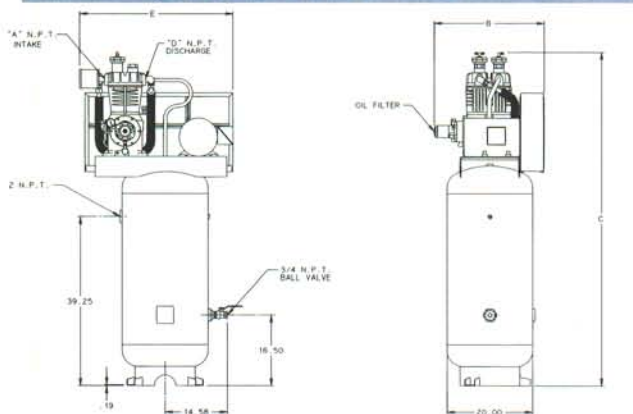
Tanks conform to ASME and National Board specs, and Canadian approval with CRN number stamp; all units are equipped with electric motors of the highest quality. California 462L approval available upon request.

PERFORMANCE DATA

MODEL	HORSE POWER	BORE L.P.	BORE H.P.	STROKE	NO. CYL.	RPM	CFM PISTON DISP.	CFM F.A.D.	STD. PRESS SWITCH SETTING	TANK SIZE (GALLONS)	APPROX. SHIPPING WEIGHT
F210*	1	2.50	—	2.00	2	481	5.50	3.30	80-100	30	275
	1 1/2					691	7.90	4.80		60	480
V210	1	2.50	—	2.00	2	481	5.50	3.30	80-100	30	275
	1 1/2					691	7.90	4.80			
F310 V310	2	3.50	2.00	2.50	2	628	8.70	6.30	135-175	60	475
										80	600
F325 V325	3	4.50	2.50	3.00	2	492	13.60	10.40	135-175	60	710
	5					828	22.90	17.40		80	770
V325	3	4.50	2.50	3.00	2	492	13.60	10.40	135-175	60	675
	5					828	22.90	17.40		80	720
F340	7 1/2	5.25	3.00	3.50	2	786	34.50	26.00	135-175	80	1020
										120	1120
F350	10	6.00	3.25	3.50	2	859	49.20	33.40	135-175	120	1185
F370	15	6.00	3.25	4.00	2	1060	69.40	49.30	135-175	120	1290
F390	20	7.50	4.00	4.00	2	937	95.80	69.20	135-175	120	1750
										200	2010
F5120	25	6.00	3.25	4.00	V4	1028	134.60	93.90	135-175	120	2100
										200	2300

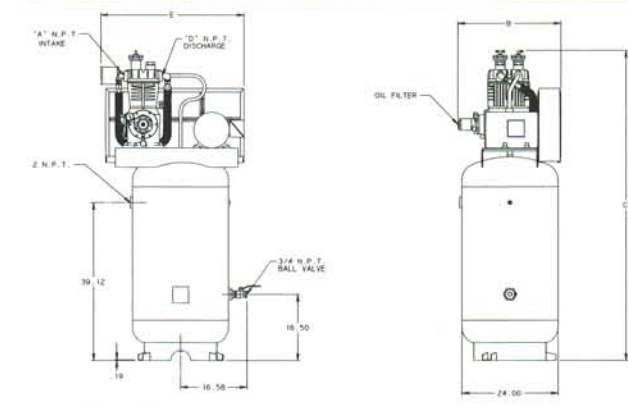
*SINGLE-STAGE MODEL

DIMENSIONS—V310 and V325 60 Gallon



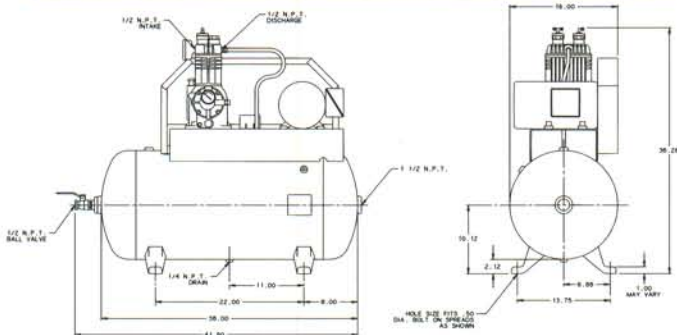
LEGEND					
MODELS	A	B	C	D	E
V310	3/4	23.62	74.25	3/4	30.69
V325	1	25.62	77.69	3/4	35.75

DIMENSIONS—V310 and V325 80 Gallon

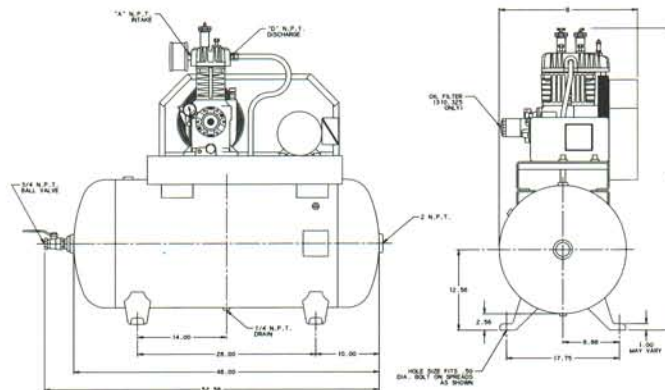


LEGEND					
MODELS	A	B	C	D	E
V310	3/4	23.62	73.75	3/4	30.69
V325	1	25.62	77.19	3/4	35.75

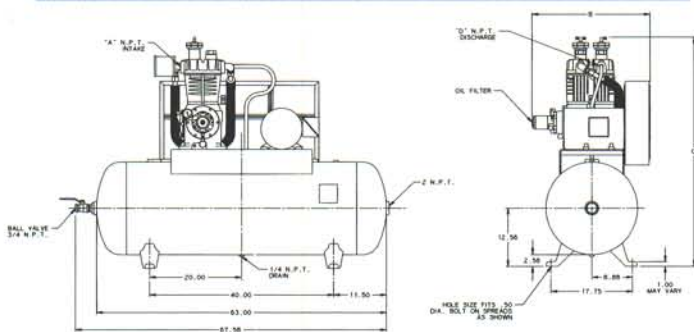
DIMENSIONS—F210 30 Gallon



DIMENSIONS—F210, F310, and F325 60 Gallon



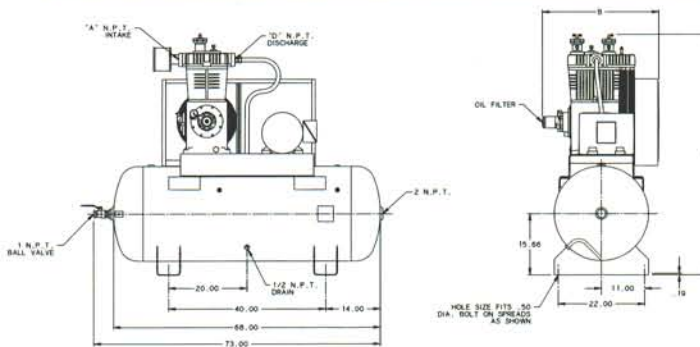
DIMENSIONS—F310, F325, F340, and 80 Gallon



LEGEND				
MODELS	A	B	C	D
F210	1/2	21.75	41.64	1/2
F310	3/4	21.75	47.31	3/4
F325	1	25.69	50.75	3/4

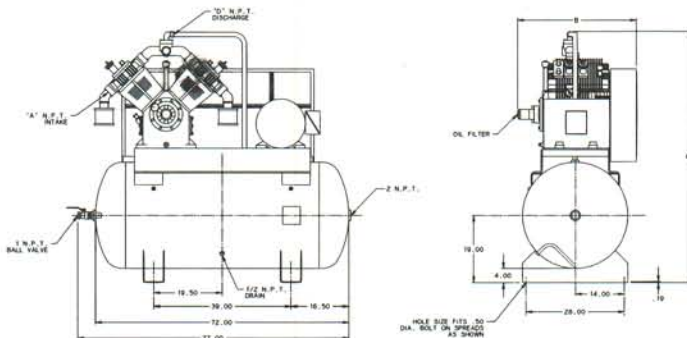
LEGEND				
MODELS	A	B	C	D
F310	3/4	21.50	46.31	3/4
F325	1	25.69	49.75	3/4
F340	1 1/2	27.94	55.25	1 1/4

DIMENSIONS—F325, F340, F350, F370, F390, and F5120 120 Gallon



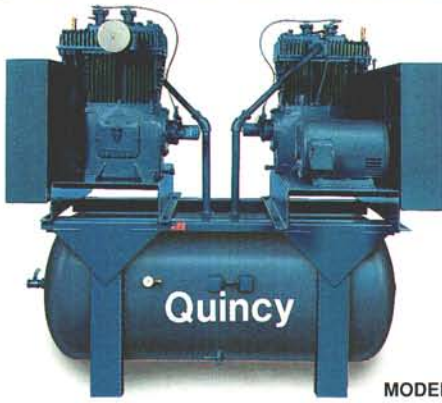
LEGEND				
MODELS	A	B	C	D
F325	1	25.69	55.38	3/4
F340	1 1/2	27.94	60.78	1 1/4
F350	2	29.34	61.44	1 1/4
F370	2	29.34	61.69	1 1/4
F390	2 1/2	34.88	65.66	1 1/2
F5120	2	33.69	62.81	1 1/2

DIMENSIONS—F390 and F5120 200 Gallon



LEGEND				
MODELS	A	B	C	D
F390	2 1/2	34.88	71.81	1 1/2
F5120	2	33.81	71.19	1 1/2

QR-25 Duplex Tank-Mounted Industrial Compressor Units



MODEL FF390

All two-stage models come complete with Safe-Q-Lube system and spin-on oil filter. Start-stop mechanism includes Quincy's unique loadless starting. Standard equipment includes pressure gauge, pressure relief valve, tank drain, shut-off valve, enclosed belt guard, pressure switch, and inlet filter. Dual control is standard on 10-25 hp tank-mounted units.

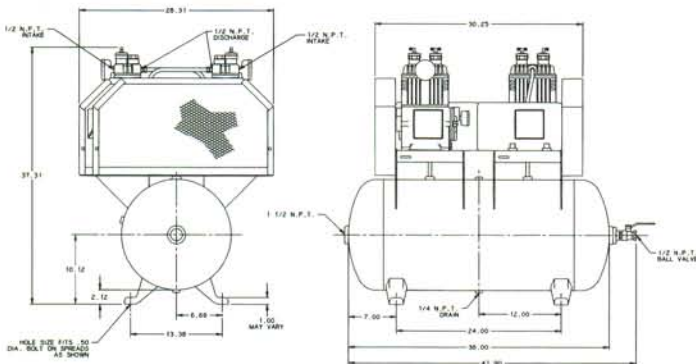
Tanks conform to ASME and National Board specs, and Canadian approval with CRN number stamp; all units are equipped with electric motors of the highest quality. California 462L approval available upon request.

PERFORMANCE DATA

MODEL	HORSE POWER 2X	BORE L.P.	BORE H.P.	STROKE	NO. CYL.	RPM	CFM PISTON DISP. 2X	CFM F.A.D. 2X	STD. PRESS SWITCH SETTING	TANK SIZE (GALLONS)	APPROX. SHIPPING WEIGHT
FF210*	1-1/2	2.50	*	2.00	2	691	7.90	4.80	80-100	60	590
FF310	2	3.50	2.00	2.50	2	654	9.10	6.64	135-175	80	890
FF325	3	4.50	2.50	3.00	2	492	13.60	10.40	135-175	80	1050
	5					828	22.90	17.40		120	1280
FF340	7-1/2	5.25	3.00	3.50	2	786	34.50	26.00	135-175	120 200	1675 2250
FF350	10	6.00	3.25	3.50	2	859	49.20	33.40	135-175	120 200	2345 2385
FF370	15	6.00	3.25	4.00	2	1060	69.40	49.30	135-175	200	2430
FF390	20	7.50	4.00	4.00	2	937	95.80	69.20	135-175	240	3300
FF5120	25	6.00	3.25	4.00	V4	1028	134.60	93.90	135-175	240	3750

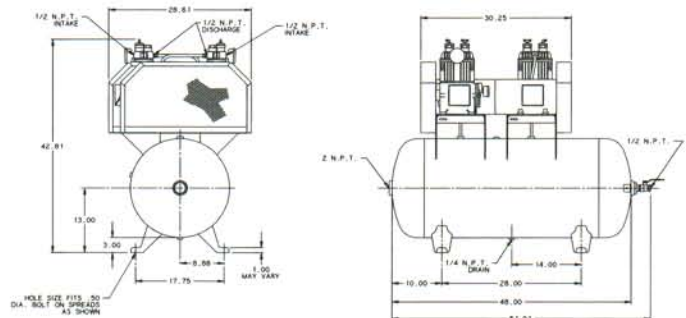
FOR CLIMATE CONTROL REFER TO QUINCY LITERATURE "QR-25 PRESSURE-LUBRICATED AIR COMPRESSORS FOR CLIMATE CONTROL."
*SINGLE-STAGE MODEL

DIMENSIONS—FF210 30 Gallon

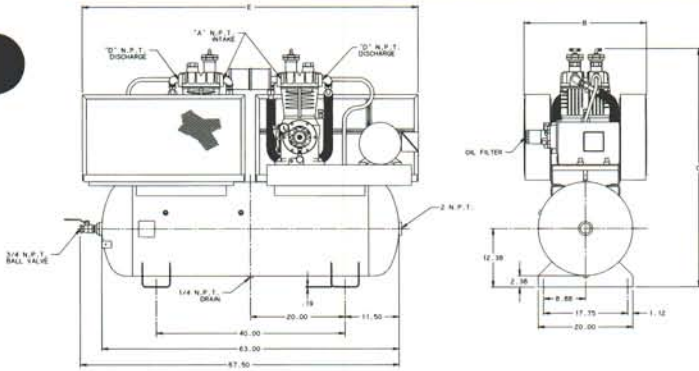


NOTES:
1) ALL DIMENSIONS GIVEN IN INCHES.
2) ALLOW A MINIMUM OF 17 INCHES ON ALL SIDES FOR SERVICE AND ACCESS.
3) BALL VALVE IS A PRESSURE LUBRICATED COMPRESSOR.

DIMENSIONS—FF210 60 Gallon

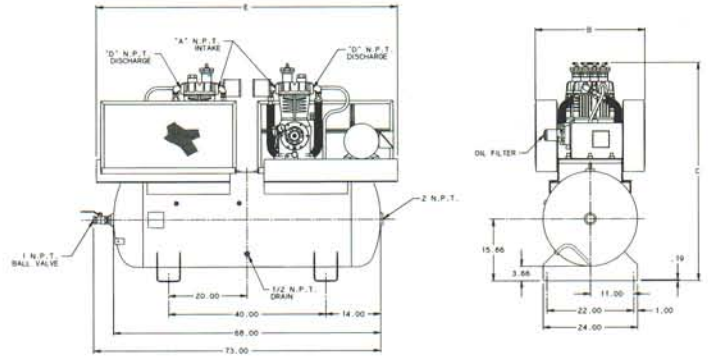


DIMENSIONS—FF310 and FF325 80 Gallon



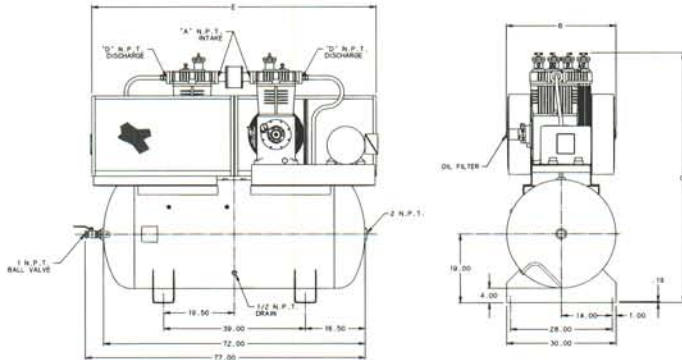
LEGEND					
MODELS	A	B	C	D	E
FF310	3/4	23.50	47.09	3/4	68.34
FF325	1	25.88	50.55	3/4	71.20

DIMENSIONS—FF325, FF340, and FF350 120 Gallon



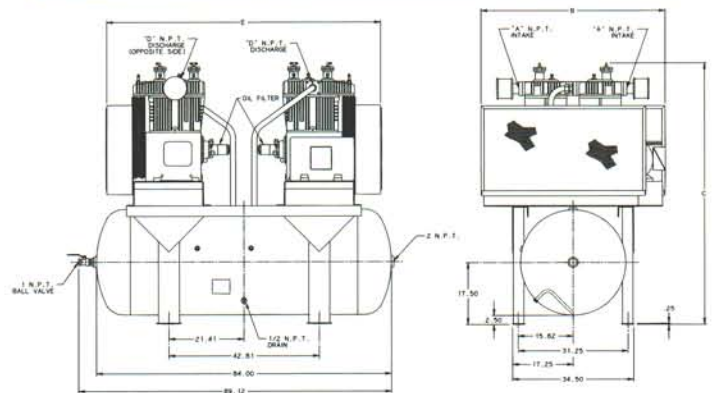
LEGEND					
MODELS	A	B	C	D	E
FF325	1	27.88	55.38	3/4	76.69
FF340	1 1/2	28.50	60.77	1 1/4	77.50
FF350	2	30.19	61.44	1 1/4	77.50

DIMENSIONS—FF340, FF350, and FF370 200 Gallon



LEGEND					
MODELS	A	B	C	D	E
FF340	1 1/2	28.50	68.12	1 1/4	78.25
FF350	2	30.19	68.77	1 1/4	78.25
FF370	2	30.19	69.00	1 1/4	78.25

DIMENSIONS—FF390 and FF5120 240 Gallon



LEGEND					
MODELS	A	B	C	D	E
FF390	2 1/2	52.50	74.38	1 1/2	78.00
FF5120	2	74.69	71.44	1 1/2	77.81

QR-25 Basic Vacuum Pump

PERFORMANCE DATA

MODEL	TYPICAL HORSEPOWER RANGE	BORE	STROKE	NO. CYL.	CFM PISTON DISPLACEMENT PER REV.	MIN. RPM	MAX. RPM	HG RANGE IN INCHES	APPROX. SHIPPING WEIGHT
R17	1/3-3/4	4.00	2.50	1	.01818	400	900	0-28	90
240	1/2-1	4.00	3.00	2	.04363	400	900	0-27	247
270	1/2-1	4.50	4.00	2	.07363	400	900	0-28	430
4125	3/4-2	4.50	4.00	V4	.14726	400	1000	0-27	767

ALL SHIPPING WEIGHTS ARE DESIGNATED IN POUNDS
DATA REFERENCE EDA-1408

QR-25 Tank-Mounted Vacuum Pump

Equipped with automatic start/stop operation. Vacuum switch has standard setting of 16-25" mercury. Other standard equipment includes vacuum pump with loadless starting, electric motor, V-belt drive, enclosed belt guard, tank drain, and vacuum check valve, all mounted on an ASME air receiver.

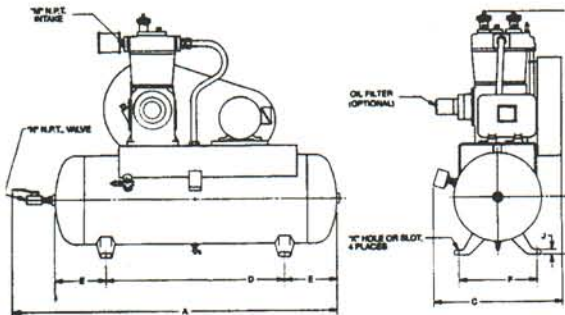
QR-25 base-mounted vacuum pumps are also available in similar horsepower ranges.

PERFORMANCE DATA

MODEL	HORSE POWER	BORE	STROKE	NO. CYL.	RPM	CFM PISTON DISP.	TANK SIZE (GALLONS)	APPROX. SHIPPING WEIGHT
FR17	3/4	4.00	2.50	1	782	14.20	30	290
	1				885	16.10		300
FR240	1-1/2	4.00	3.00	2	604	26.40	60	675
	2				828	36.13		675
FR270	5	4.50	4.00	2	859	63.25	80	955
FR4125	7-1/2	4.50	4.00	4	950	139.90	200	2420

DATA REFERENCE EDA-1408

DIMENSIONS—ALL MODELS



MODEL	A	B	C	D	E	F	H	J	K	M	N
FR17	44.59	36.00	23.12	22.00	8.00	13.75	10.25	1	.56	3/4	1/4
FR240	57.25	46.34	21.88	28.00	10.00	17.75	13.00	1	.56	1 1/4	1
FR270	72.25	51.91	26.25	40.00	11.50	17.75	13.00	1	.56	2	1
FR4125	81.75	68.80	27.75	39.00	16.50	28.00	19.50	1	.56	2	1

We reserve the right to change specifications without liability, without advance notice, and without incurring any obligation for products previously or subsequently sold.
Proper filtration must be used for breathing air applications to meet OSHA 29CFR1910.134.



For more information on the QR-25 series, call your local Quincy distributor or call the Quincy Air Line, 217-222-7700.



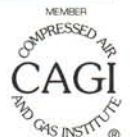
Quincy

Compressor Division

Coltec Industries



Quincy. Undeniably the world's finest compressors.



Quincy Compressor Division, 3501 Wismann Lane, P.O. Box C-2, Quincy, Illinois 62305
©Quincy Compressor. All rights reserved. Litho in USA. (QR-25-006 9/95)